

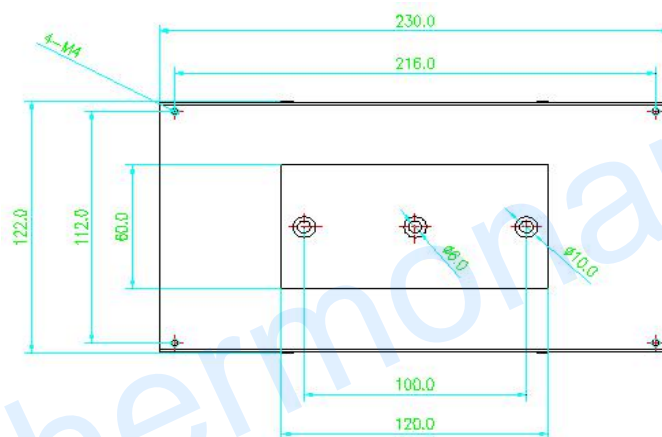
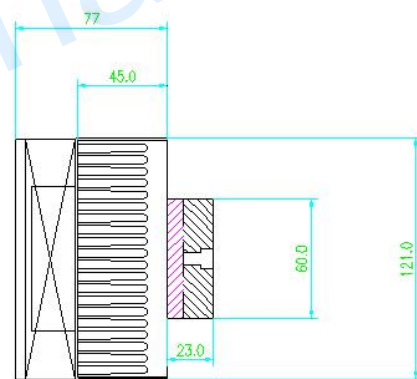
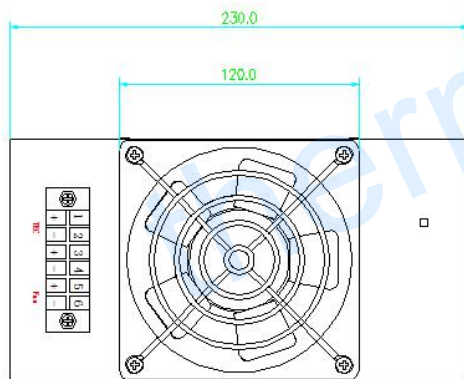
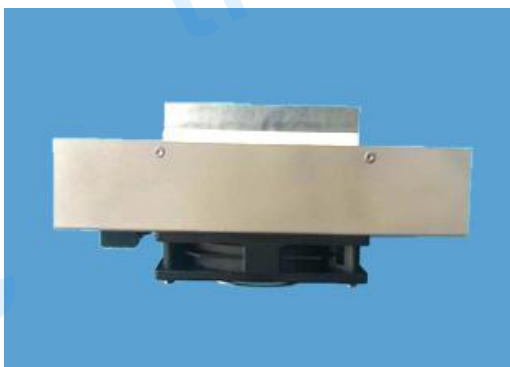
## TECC-HEC55-24V Thermoelectric System

### Description

The system introduced here is an Air to cold plate thermoelectric cooling unit that offers large temperature difference deep cooling by cooling objects via direct conduction. Heat is absorbed through a cold plate and dissipated through a heat sink with a fan. The multistage thermoelectric modules are used to achieve a high temperature difference to the ambience

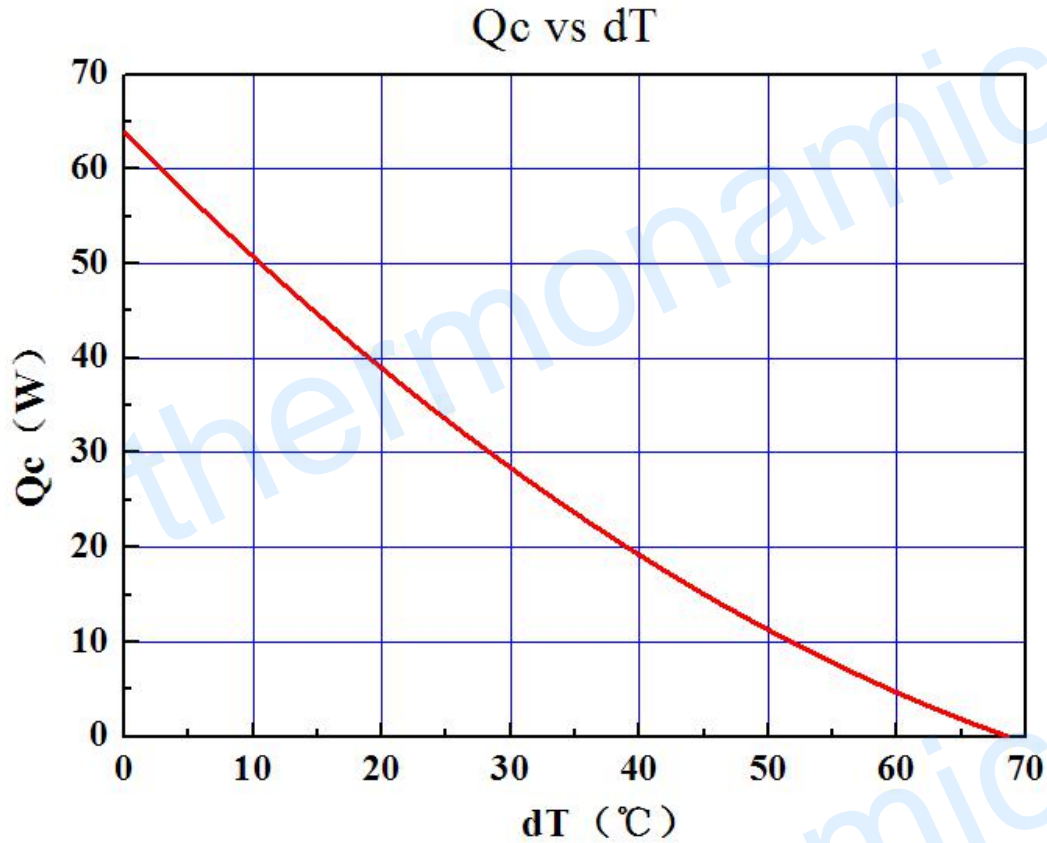
The TECC-HEC55-24V thermoelectric plate runs on 24 VDC with 4.3A nominal current.

### Structure of the System



### Over-all Structure and Electrical Connection Diagram

Performance Curves



Specification Sheet

Part Number		TECC-HEC55-24V
Input Voltage / VDC		24
Input Current / A		≈ 4.3
Maximum Cooling Power / watts		64W under 30C ambience
Heat Sink Spec / mm		230 × 120 × 45
Cooling/heating plate / mm		120 × 60 × 15
Fan	Spec / mm / Quantity	120 × 120 × 30/ 1pcs
	Work Condition	24 VDC / 0.3 A
Over all Dimension (Length × Width × Height) / mm		230 × 122 × 100
Weight / Kg		2.2kg